

WORKTOP SEAL



FINAL FINISHING TREATMENT
FOR WOODEN WORKTOPS,
TABLES ETC.

MATT, MID-SHEEN & GLOSS

Data Sheet & Application Instructions: Worktops, counter tops and furniture, etc

WORKTOP SEAL - a final extra protective finish for all work surfaces in kitchens, bathrooms & wet-rooms etc; domestic and commercial. Usually used after treatment with **Timbertect Interior**.

Worktop Seal is a revolutionary timber treatment. It provides a beautifully natural appearance, with little surface coating. It is very hard-wearing, waterproof, stain resistant and chemical resistant. It is very easy to apply and easy to maintain. It is usually used after the surface has been pretreated with **Timbertect**.

Extra Protection for working surfaces: Worktop Seal adds an extra dimension to the protection offered by **Timbertect Interior**. It is specially formulated to resist the powerful chemicals often present in food, drink, toiletries and domestic cleaning products.

Natural Beauty:

Worktop Seal enhances the natural colours and patterning of the timber, making it look and feel beautiful. There is hardly any surface coating, so wood still feels and looks like wood.

Deep Down:

The full **Timbertect -Worktop Seal** treatment soaks deeply into the surface of the timber, strengthening the natural fibres and providing deep down protection even when the timber is worn after years of use.

Easy Living:

A Worktop Seal treated surface is easy to live with. It is easy to clean and usually never needs re-applying. There is no residual smell, once Worktop Seal has dried.

The Professional Choice:

Worktop Seal is specifically designed to be easy to apply for both the professional, and DIY-er; its careful formulation means that no special skills are needed.



Product Range:

WORKTOP SEAL comes in the following grades:

MATT: Gives a flat matt finish.

MID-SHEEN: Gives a mid-sheen finish, that can be buffed up to a higher sheen if required.

GLOSS: Gives a finish with a high sheen.

Most wood will require pre-treating with **TIMBERTECT INTERIOR**; see the **Timbertect Interior Data Sheet** for full info.

For protecting all outdoor wood see our info sheet on **TIMBERTECT EXTERIOR**.

Useful Additives:

The following additives can be easily mixed into any of the above Worktop Seal products:

CATALYST/ACCELERATOR: This additive speeds up the drying/cure times of **Timbertect Interior**. This additive is supplied with Worktop Seal and is included in the price, but if you want a slower cure you don't have to use it.

For adding to Timbertect and Worktop Seal if required:

WHITENING ADDITIVE FOR PALER TIMBER: This additive can dramatically reduce the darkening effect of **Timbertect** on pale woods such as Beech, maple or oak. Used correctly, some pale wood can look almost unsealed, with little apparent coating nor any darkening.

COLOURED 'STAINING' ADDITIVES:

White/Antique Oak/Brown/Black/grey PIGMENT additives: We have various different colour 'stains' that can give a coloured appearance to timber; add directly to **Timbertect** or **Worktop Seal** for easy application.

FIRE RETARDANT ADDITIVE: We can provide a flame retardant additive, which will give a class 1 rating.

For further advice please contact us on:
01229 588449

info@conservationchemicals.co.uk

CCC Ltd, Unit 1E, Cross Lane Industrial Estate,
Cross Lane, Ulverston, Cumbria LA12 7NE, UK

Product appearance and availability:

Worktop Seal is a semi-opaque, thin liquid, available in 250ml, 1L & 5L containers.

Application:

Worktop Seal is applied in one coat, to non porous surfaces, usually after pre-treatment with Timbertect Interior. See full instruction sheet for details.

Coverage:

Approximately 12-18m² per litre, depending on the texture of the wood and how it is applied.

New wood (previously untreated):

For new wood, follow the instructions from the wood supplier regarding acclimatising the wood. Most woods will need pre-treating with Timbertect Interior before applying Worktop Seal. See Timbertect Interior Data Sheet for full information.

Pre-treated, older woods:

Most timbers are slightly porous. If so the timber must be pre-treated with at least one coat (usually two) of Timbertect Interior first.

If the wood is painted, stained, waxed, oiled or treated with any other product then this must be removed before pre-treating with Timbertect Interior. Worktop Seal is not designed to be compatible with any other treatment.

Filling holes and gaps:

Fill holes, cracks or other defects with a non-wax, resin-based filler as usual.

Wood for wet rooms, bathrooms or on a concrete surface:

Timbertect Interior and Worktop Seal sealants cause less warping of wood than conventional varnishes and lacquers due to their low-stress cure system.

It is advisable, however, to treat worktops, tabletops or wide boards with a balancing treatment of Timbertect Interior to the back and sides. Just one coat is sufficient.

Naturally oily wood, e.g. Teak or Iroko:

Oily or kiln-dried timber must be wiped over with solvent to remove surface oils.

Sanding/finishing before applying:

If applying onto wood already treated with Timbertect Interior, the surface should be lightly sanded to provide a key before applying Worktop Seal.

Pre-Staining or bleaching:

If wood is to be stained before sealing, use only spirit-based wood dyes. Do not use oil or resin-based stains. If wood has been bleached, the bleach must be fully neutralized (with dilute white vinegar), rinsed thoroughly and vacuumed. Leave to dry for at least 4 hours before sealing. The wood must be dry before using Timbertect Interior or Worktop Seal products.

Finishing with Worktop Seal:

To give extra protection against aggressive food, cleaning agents, cosmetic chemicals and many other commonly found household substances it is advisable to finish the protection with a final very light coat of Worktop Seal. This is particularly useful for worktops, tables, sink surrounds and panels around baths. Pre-seal the timber in the usual way with Timbertect Interior; see separate info sheet.

Safety equipment:

Rubber gloves, 'Organic Vapour' or 'Acid Fumes' labeled face mask, eye protection; e.g. goggles (all available from us or good DIY shops). Wear overalls or work clothes.

Job equipment:

- Triple-C Sponge Applicator (highly recommended), or soft brush, small sponge or cloth; for applying.
- Paint tray or polythene bowl wide enough to take applicator/brush etc (25 cm width).
- Clean cotton cloths for polishing off. We can provide these if required.
- Triple-C Tool Cleaner & Thinners or other suitable solvent (cellulose thinners or brush cleaner) for cleaning tools.
- Medium to fine sandpaper, 'artificial' wire wool or other abrasive for sanding between coats.
- Vacuum cleaner for removing dust etc.
- Electric buffing/sanding machine (if required, for larger areas).

Toy & Food safety:

Timbertect Interior is totally safe to use on toys and is also food safe, once it has fully cured. Please allow 5 days before using the sealed item to ensure complete curing of resin.

Health & Safety:

The Timbertect Interior range is safe and easy to use, as long as you follow the instructions on the next page and take the following precautions:

Non-spray applications:

Wear gloves and goggles. Do not get the sealant on your skin; it will be very hard to remove once it has dried and in rare cases it may cause a mild rash.

Keep the room you are working in well ventilated; open windows and doors. Take care not to expose other people in the same building to fumes. The smell is not harmful, but is strong. Take care to turn off re-circulating air conditioning units, to avoid spreading the smell throughout a building.

Wear an organic vapour face mask (available from us or any good DIY/hardware store).

Wear overalls or old clothes; Worktop Seal is hard to get out of fabric once it has dried.

Spray applications: Worktop Seal can be sprayed, but this MUST be done inside a spray booth and wearing full Personal Protective Equipment (PPE). A full Material Safety Data Sheet (MSDS) is available on request.)

'Spread of Flame' fire safety: We can provide a flame retardant additive, which will give a class 1 rating.



Application Instructions:

Worktop Seal: Worktops, tables etc.

SPONGE ON, BUFF OFF METHOD:

For a fully sealed, minimum build finish.

Applying:

The surface should either be naturally non-porous, or made so by the pre-treatment of Timbertect Interior. The surface **MUST** be lightly sanded with fine sandpaper to provide a good key for the Worktop Seal.



Wipe up any dust or debris created.

The sealant should be applied using a Triple-C Sponge Applicator (cut to size if required), small sponge, cloth or brush.

Ensure the surface is clean, smooth and dry.

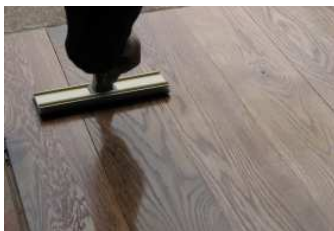
Make sure there is good ventilation and that you are using all the safety equipment.

- If possible work on a whole surface at once, eg a table top or piece of furniture. If the piece is too large, try to keep to natural corners or sections.
- Add the contents of the small catalyst bottle if supplied and shake the bottle of sealant well. Pour 2-3mm of sealant into a paint tray. Load the applicator liberally and then squeeze off the surplus on side of tray.
- Apply a **thin film** to the surface, working along the lengths of grain. (If the sealant is visibly absorbed within a few seconds then it is best to immediately wipe this up and



apply a coat of Timbertect Interior).

- Return to the starting point and using the applicator (etc), **without reloading it**, even out over the whole area you



have just worked on, leaving as even a finish as possible.

- Allow it to soak in for a few seconds and then, using a folded cotton pad, mop up most of the unabsorbed sealant. Using the same pad, even-out the remaining sealant to leave a very thin film on the surface. The aim is to leave a very light film that will 'disappear' as the sealant starts to dry. Make sure your cotton pad is dry, clean and neat!
- If necessary, any streaks or smears can be very lightly wiped away at the 'wet' stage; don't try to do this once the sealant has started to dry. If you are not happy with the effect then remove the sealant with Triple-C Tool Cleaner & Thinners or cellulose thinners, dry and re-apply.

- Allow to cure until completely tack-free (this will take between 4 and 8 hours, depending on the temperature).

You can speed drying times by:

- 1: Using our CATALYST additive.
- 2: Making sure the room is warm and well ventilated.
- 3: Turning off air conditioning units.
- 4: Increasing the humidity in the room.

First use:

You can use your furniture or worktops 6 hours after the surface is no longer tacky. This is about 12-16 hours after the sealant was applied. In the first 2-3 days be very careful to wipe up any spillages immediately, and try to restrict the use of acids such as vinegar and lemon juice. After this the sealant becomes fully hardened and is ready for normal use. Even when fully sealed some oils may penetrate the Timbertect/Worktop seal protection, so try not to leave wet oil on the surface for long periods of time. If oil does mark the surface see below.

Troubleshooting:

Blemishes, uneven finish or unwelcome finish: If you are not happy with the finish of your timber, then follow steps above to re-apply a light coat. This will eliminate most problems.

Scratches: Deep scratches through the finish can be lightly painted with Worktop Seal to minimise their visual effect. Buff off excess sealant with a cotton cloth.

To remove a scratch completely you need to sand it back to bare smooth wood. Once you have the required finish, seal with Timbertect Interior first, followed by a final coat of Worktop Seal, taking care to buff in edges carefully.

Oil stains: If oils have left a stain, wipe over with white spirit and a cloth and allow to dry, if the stain remains the stain must be sanded out lightly as with scratches.

Maintenance of Surfaces Treated with Worktop Seal:

- Wipe up spillages immediately.
- Regularly wipe over with a damp cloth with a little, weak concentration of detergent.
- Wipe up grease or oil with absorbent cloth/paper etc, or wipe over with cloth moistened with white spirit to clean area fully.
- After significant use, re-application of sealant will clean and revive worn or dulled surfaces. Clean the area first, then apply the sealant very lightly on a soft cloth or with an almost dry applicator.
- Severe wear can be treated by cleaning the worn area, re-



applying sealant and wiping off. There is no need to re-sand unless the surface has become so worn or damaged that resurfacing is necessary.

IMPORTANT

This information is provided in good faith on the basis of field and laboratory testing. The manufacturers will use their best endeavours to provide accurate and reliable advice on the use of their products, but it is the express responsibility of the intending user to satisfy him / herself as to the suitability for use in any particular situation, as conditions of use are outside the manufacturer's control. Materials found to be faulty in manufacture will be replaced, but no other liability, either express or implied, can be accepted.