

TIMBERTECT

INTERIOR TIMBER SEALANT

Data Sheet & Application Instructions



Timbertect Interior is a revolutionary timber treatment. It provides a beautifully natural appearance, with little surface coating. It is very hard-wearing, water proof, stain resistant and chemical resistant. It is very easy to apply and easy to maintain.

Protecting Timber:

Timbertect works brilliantly on any type of interior wood. Its protection is second to none; using the latest ingredients to protect against water, dirt, drinks & food, household chemicals and high levels of wear & tear.

Natural Beauty:

Timbertect enhances the natural colours and patterning of the timber, making it look and feel beautiful. There is hardly any surface coating, so wood still feels and looks like wood.

Deep Down:

Timbertect soaks deeply into the surface of the timber, strengthening the natural fibers and providing deep down protection even when the timber is worn after years of use.

Easy Living:

Timbertect is easy to live with. The surface is easy to clean and usually never needs re-applying. There is no residual smell, once TimberTECT has dried.

The Professional Choice:

Timbertect is specifically designed to be easy to apply for both the professional, and DIY-er; its careful formulation means that no special skills are needed. There are several grades of TimberTECT Interior, with varying finishes, drying times and odours. See the product list for more details.

Product Range:

TIMBERTECT INTERIOR TIMBER SEAL comes in the following grades:

LOW ODOUR: A slow drying but very low odour product, for specialist locations where solvent smell is a problem.

ORIGINAL: A medium drying, medium smelling product. This product has the best balance between drying times and smell. This is our best selling version of TimberTECT and is easiest to use.

PROFESSIONAL: A fast drying but high odour product, for professional users, where time is of the essence, and smell is not too crucial.

USEFUL ADDITIVES:

The following additives can be easily mixed into any of the above TimberTECT Interior Products:

CATALYST/ACCELERATOR: This additive speeds up the drying/cure times of TimberTECT Interior. This can help in many circumstances, but ask for advice first. Mostly for professional users.

PALE WOOD ADDITIVE: This additive can dramatically reduce the darkening effect of TimberTECT on pale woods such as Beech, maple or oak. Used correctly, your pale wood can look totally unsealed, with neither a coating nor any darkening.



For further advice please don't hesitate to contact us on:

01229 588449

or

info@conservationchemicals.co.uk

CCC Ltd

Unit 6, Lightburn Trading Estate

Ulverston, Cumbria, LA12 7NE, UK

Pre-Treatment Preparation:



For new wood, follow the instructions from the wood supplier before laying regarding acclimatizing the wood to the place it will be laid. Under-floor heating has no effect on the use of Triple-C Timbertect Interior. Its suitability or otherwise is dependent on the type of wood being used.

Fill holes, cracks or other defects with non-wax, resin-based filler.

Timbertect Interior sealants cause less warping of wood than conventional varnishes and lacquers due to their low-stress cure system. It is advisable, however, to treat wide boards, panels, or any flooring being laid directly over concrete slabs, with a balancing treatment to the back and sides.

Safety Equipment:

Rubber gloves.
'Organic Vapour' or 'Acid Fumes' labeled face mask.
Eye 'splash' protection; e.g. goggles.
(all available from us or a good DIY shop)
Overall or work clothes.

Job Equipment:

Triple-C Timbertect Interior (and catalyst if fast cure required).
Triple-C Sponge Applicator (highly recommended), or mohair roller, soft brush etc for applying Timbertect Interior.
Paint tray or polythene bowl wide enough to take applicator / roller etc (25 cm width).
Cotton rags (for wiping up spillages, overlaps etc). We can provide these for you if required.
Triple-C Tool Cleaner & Thinners or other suitable solvent (cellulose thinners, or brush cleaner) for cleaning tools.
Medium or fine sand paper, 'artificial' wire wool (not steel wire wool) or other abrasive.
Vacuum cleaner / rubbish bags for keeping the job clean and tidy.
Electric buffing machine (if required, for floors).

If wood is to be stained before sealing, use only spirit-based wood dyes. Do not use oil or resin-based wood stains. If wood has been bleached, the bleach must have been fully neutralized and dried for at least 4 hours before sealing.

The wood should be soundly fixed and sanded to a smooth, scratch-free finish, using progressive sanding from coarse to fine sand-papers. Oily or kiln-dried timber will require wiping over with white spirit to remove surface oils. (Contact us for details.)



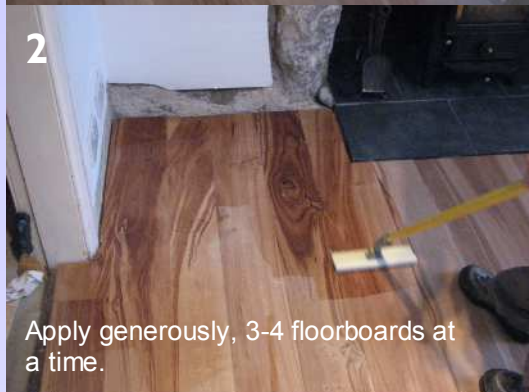
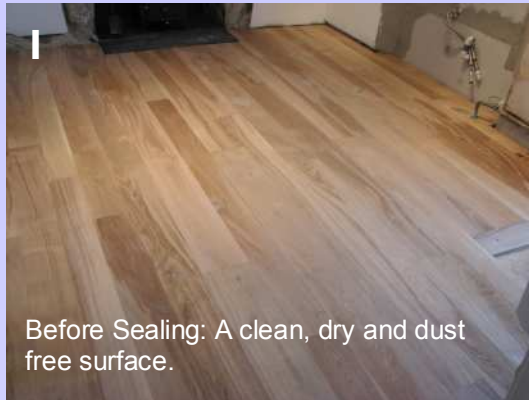
Safety Notes:

The Triple-C Timbertect Interior range is easy to use and safe, as long as you follow the instructions on the next page and take the following precautions:

Wear gloves & goggles. Don't get the sealant on your skin; it will be very hard to get off once it has dried and in rare cases it may cause a mild rash.
Keep the room you are working in well ventilated; open windows and doors. Take care not to expose other people in the same building to fumes. The smell is not harmful, but is strong. Take care to turn off re-circulating air conditioning units, to avoid spreading the smell throughout a building.
Wear an organic vapour face mask (available from us or any good DIY/hardware store).
Wear overalls or old clothes; Timbertect Interior is hard to get out of fabric once it has dried.

(NB: A Full Safety Data sheet is available on request.)

TIMBERTECT INTERIOR:



Applying the FIRST coat: Floors



1: First things first

Plan your route: Break the floor up into sections and do each section at a time. Don't forget alcoves or other small rooms or cupboards. Plan your route so that you finish at an exit. Don't get boxed in. Make sure any overlaps are wiped carefully. **Shake the can of sealant well.** Pour 2-3mm of sealant into paint tray. Load the applicator, roller or brush liberally and wipe off surplus on side of tray.

2: First Coat

We strongly advise that the sealant is applied using a Triple-C Sponge Applicator. You can use a roller or brush, but the Sponge Applicator is easier, quicker and applies the correct amount of sealant to the surface.

Fig: 3a



Apply a **generous** coat to the timber surface, working along the lengths of boards/grain to a surface area of about 2m² at a time (or three/four board widths). In this coat the sealant must be applied **so that the wood is fully wetted**, with areas being re-wetted if the sealant soaks in quickly. Go over the area again working the sealant in.

3: 'STRIKING OFF': When you have applied Timbertect to a whole length of the floor return to the starting point of this section and use the applicator (etc), **without reloading it**, to spread out any unabsorbed sealant over the whole area, you have just worked on, leaving as even a finish as possible. Any large pools of sealant should be moved to the next area and used to seal this new strip.

It is important to even out any overlaps or obvious pools of sealant.

Fig 3a: The evening out process (known as 'Striking Off') is best done when you have a full run of boards treated. Run the applicator along the boards to leave an even finish

4 & 5: Continue as above until the whole surface has been treated.

Leave to dry until tack-free (this will take between 4 and 8 hours, depending on the temperature) before applying the second coat. Don't worry if the floor looks patchy at this point, the sealant soaks in unevenly, since wood has lots of variation in the way it soaks up liquids. The second coat should even up the appearance.

Try not to wait more than 24 hours before applying the second coat.

You can speed drying times by:

- 1: Using our CATALYST additive.
- 2: Making sure the room is warm, and is well ventilated.
- 3: Turning off air conditioning units.
- 4: Professional users may wish to use our 'Professional' grades, which are significantly faster drying.

TIMBERTECT INTERIOR:



Applying the SECOND coat: Floors



6/7. Once the first coat is dry (not tacky to touch)

The second coat must be applied **within 24 hours of the first coat having dried**. The second coat is intended to even up the appearance of the surface once the first coat has dried, and should not use as much sealant.

9: 'De-nibbing' or sanding down.

Before applying the second coat (once the first coat is tack-free), the surface should be lightly rubbed over with a mesh screen disc (150 Grit) , fine sandpaper or fine-medium artificial wire wool, to remove any dust or other debris that has settled as the sealant dries. Vacuum up the dust this has created.

8: Second Coat

Repeat steps 1 - 6 above EXCEPT that you should need less sealant because less will soak in, so take care not to leave pools of sealant on the surface.

Leave to dry until TACK FREE (this will take between 4 and 8 hours, depending on the temperature) before walking on.

9: Buffing/polishing

If you want a MATT finish, then leave floor to dry at this point, if you want a slight 'easy-care' sheen, follow the instructions below.

Within the first 24 hours (after the sealant is touch dry) it is possible to buff the surface to achieve a mid-sheen polish. To do this you need to use an abrasive woven pad, like the one pictured. These come in four basic abrasive grades:

ABRASIVE/BUFFING PADS:

White: usually too soft to buff Timbertect.

Green: Try this first, it can work.

Red: Most likely to buff nicely.

Black: Most abrasive, only use if trying to remove blemishes or buffing 2-3 days later.

After 3 days, buffing will have no effect and blemishes or mistakes can only be removed by lightly sanding and re-sealing.

10: First Use

You can move furniture onto you floor 6 hours after the floor is no longer sticky. This is about 12-16 hours after the sealant was applied. Be really careful to wipe up spillages within the first 48 hours. After this the sealant becomes fully hardened and you can use normally.

If your floor still looks patchy or you are not happy with the finish, you can try applying a 3rd coat, repeating steps 7-10 above.

11: Troubleshooting

Blemishes, uneven finish or unwelcome finish: If you are not happy with the finish of your floor, then follow steps 7-9 above to re-apply a light coat. This will eliminate most problems.

Scratches: Deep scratches through the finish can be lightly painted with Timbertect to minimise their visual effect. Buff off excess sealant from around the scratch.

To totally remove a scratch you need to sand it carefully back to bare smooth wood. Once you have the finish required seal from step 1 onwards, take care to buff in edges carefully.